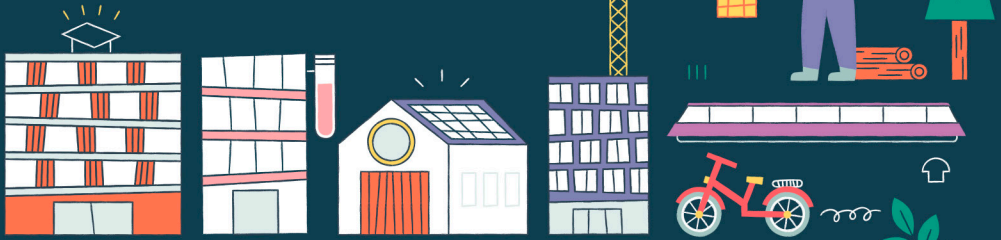


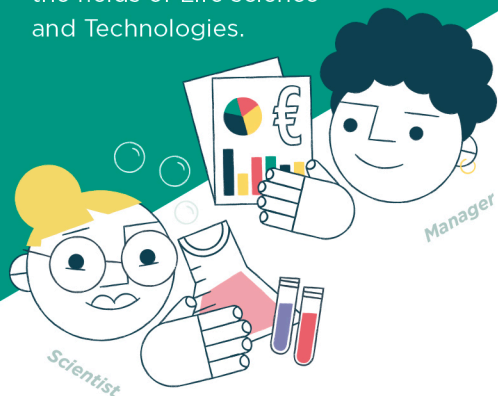
How about you?
Do you want
to be a key
stakeholder
in an ever-
changing world?



And how
about
choosing **courses**
in **agricultural**
and **environmental**
sciences offered
at the **ENSAT**?

WHAT IS A GRADUATE STUDENT FROM ENSAT?

A Graduate from the ENSAT is, not only a **scientist** but also, a **manager** who works in the fields of Life science and Technologies.



He has to be able **to cope with the current challenges** such as



the preservation of natural resources



ecological transition



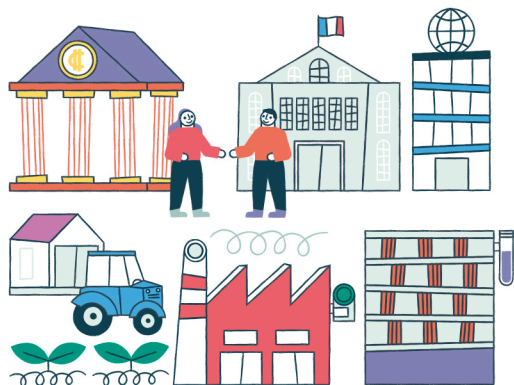
or food quality

VARIOUS TRADES AND MANY DIFFERENT CONTEXTS

He/she can hold different positions in various sectors such as:

- **agriculture**
- **food industry**
- **environmental sectors**

And he/she deals with actors employed by different organisms: companies, public institutions, research laboratories, NGOs, associations,...



WHAT ARE THE SKILLS OF A GRADUATE STUDENT FROM ENSAT?

SEVEN SKILLS

He/She will have **to develop 7 skills** during his/her training.

FOUR OF THEM ARE TECHNICAL SKILLS

Diagnosing situations

Designing solutions

Producing goods or services

Validating a process, a product or an organization

AND THREE MANAGERIAL SKILLS


Managing complex projects

Communicating

Counselling

HOW TO DEVELOP THESE SKILLS? AT THE ENSAT!

You will follow **courses** that will provide you with the **resources** (knowledge and methods focused on disciplinary fields, necessary for the achievement of these projects.

 **Agromy and environmental sciences**

 **Economics, social and management sciences**

 **Engineering and digital sciences**

 **Food processing sciences**

At the ENSAT, you will acquire these skills through **interdisciplinary projects**, inspired by authentic working situations, encountered by stakeholders working in agronomy.

SOME EXAMPLES OF PROJECTS



PRODUCE AND ANALYSE WINE

During the first year, you will discover **the wine project**. From harvest to wine making, you will **produce wine**, then **validate the finished product**, using biological, sensory analysis and marketing tools.

DIAGNOSE AND GIVE ADVISE ON A COMPLEX AGRO-ECOSYSTEM



You will also have the opportunity **to establish a full diagnosis** of farming operations. During this internship, you will have **to identify potential problems** and to **build tailored solutions** with the farmer.

And this is just an overview of the course program!

Watch our video presentation:
<https://bit.ly/2PfwTty>

For more information,
you can contact us at :

Mail : communication@ensat.fr
Tel : 05.34.32.39.02

And also visit our website www.ensat.fr
and find us on our social networks:

